



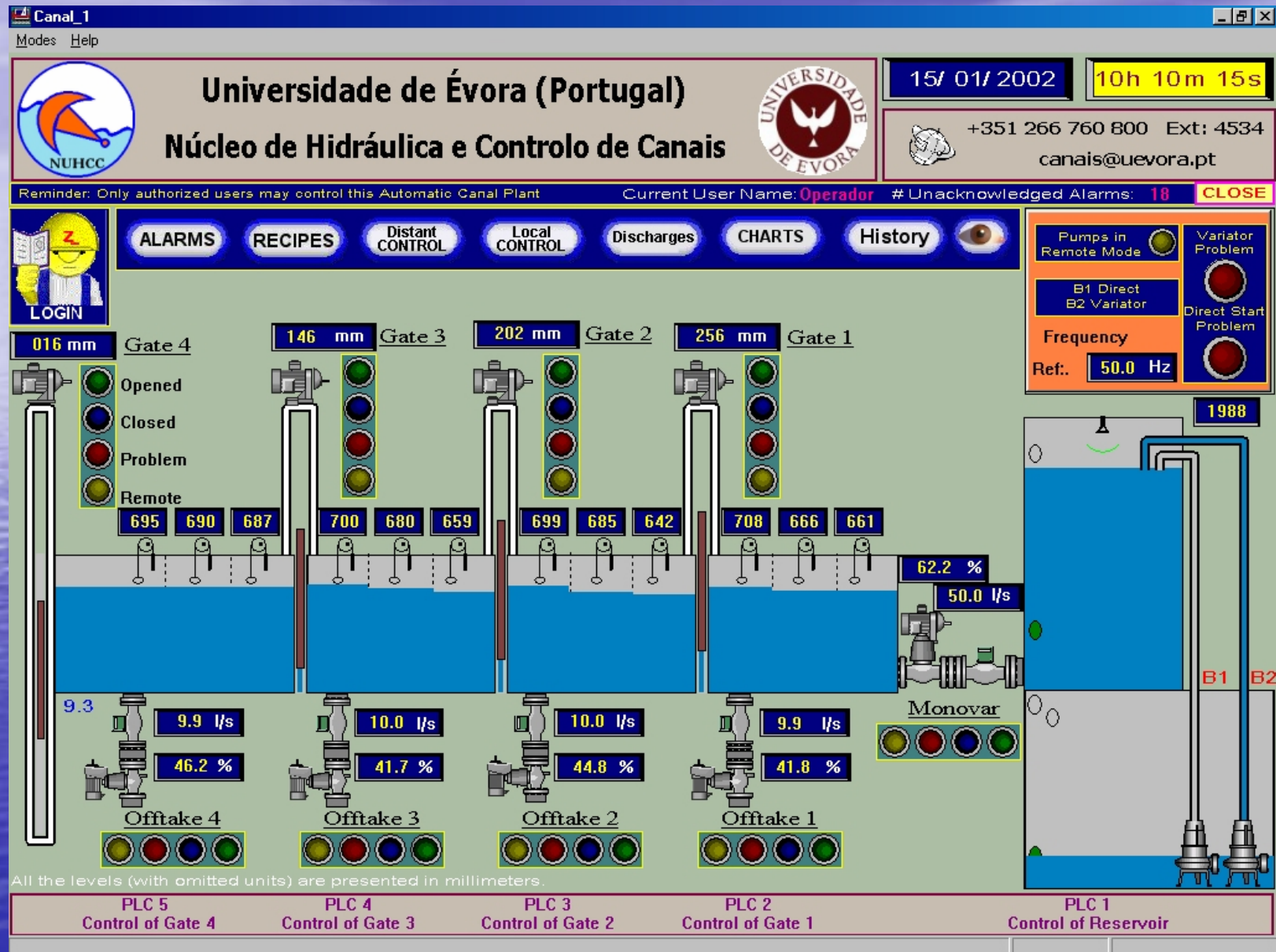
Núcleo de Hidráulica e
Controlo de Canais



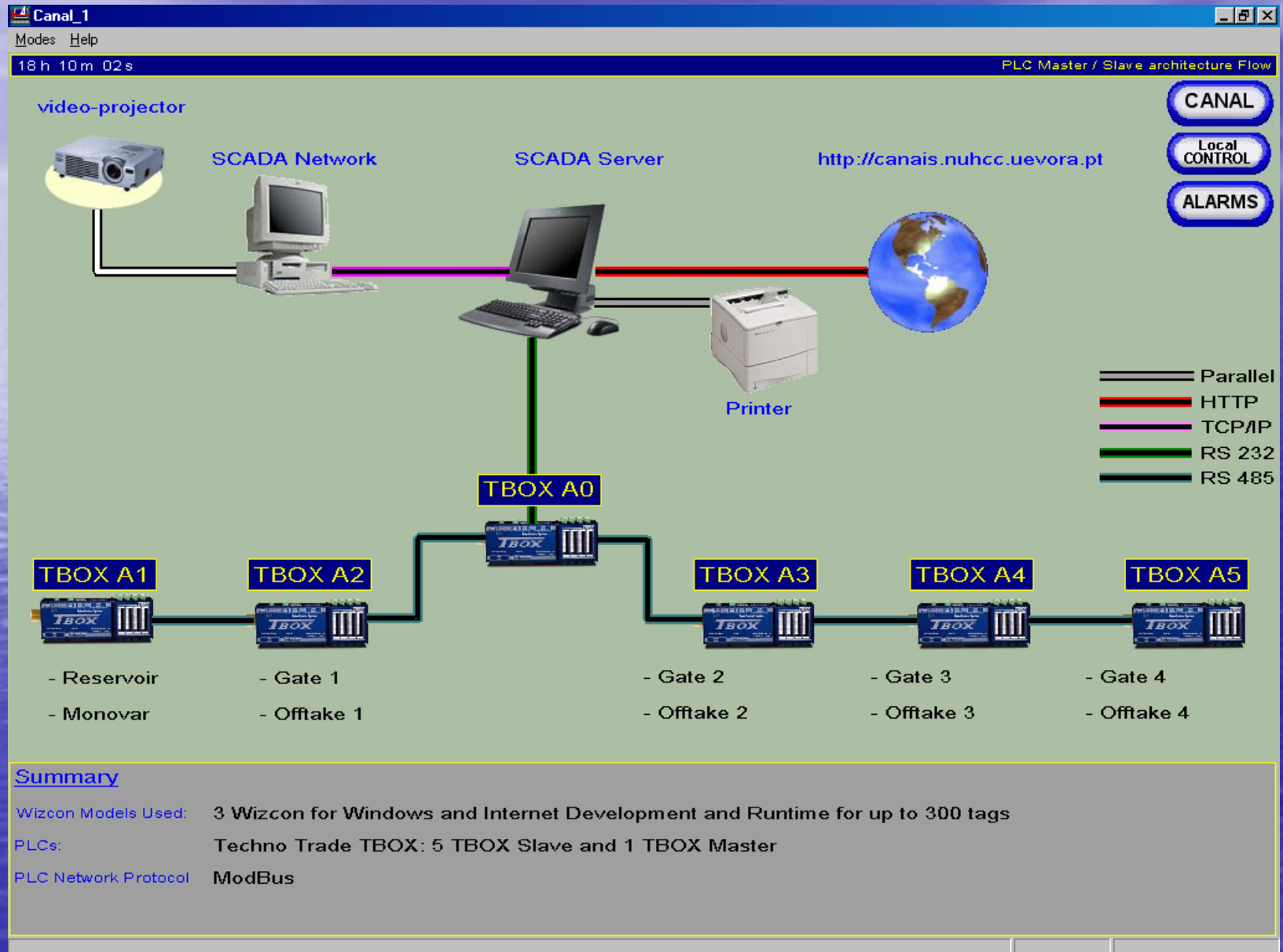
Alguns Sinópticos da Aplicação SCADA

<http://canais.nuhcc.uevora.pt>

Sinóptico Principal



Rede PLC



Modos de Control

Canal_1

Modes Help

18h 10m 39s

LOCAL CONTROL MODES

SCADA SCADA can control

LOCAL SCADA cannot control. Only TBOX terminal

CANAL

RECIPES

Distant CONTROL

A5

A4

A3

A2

A1

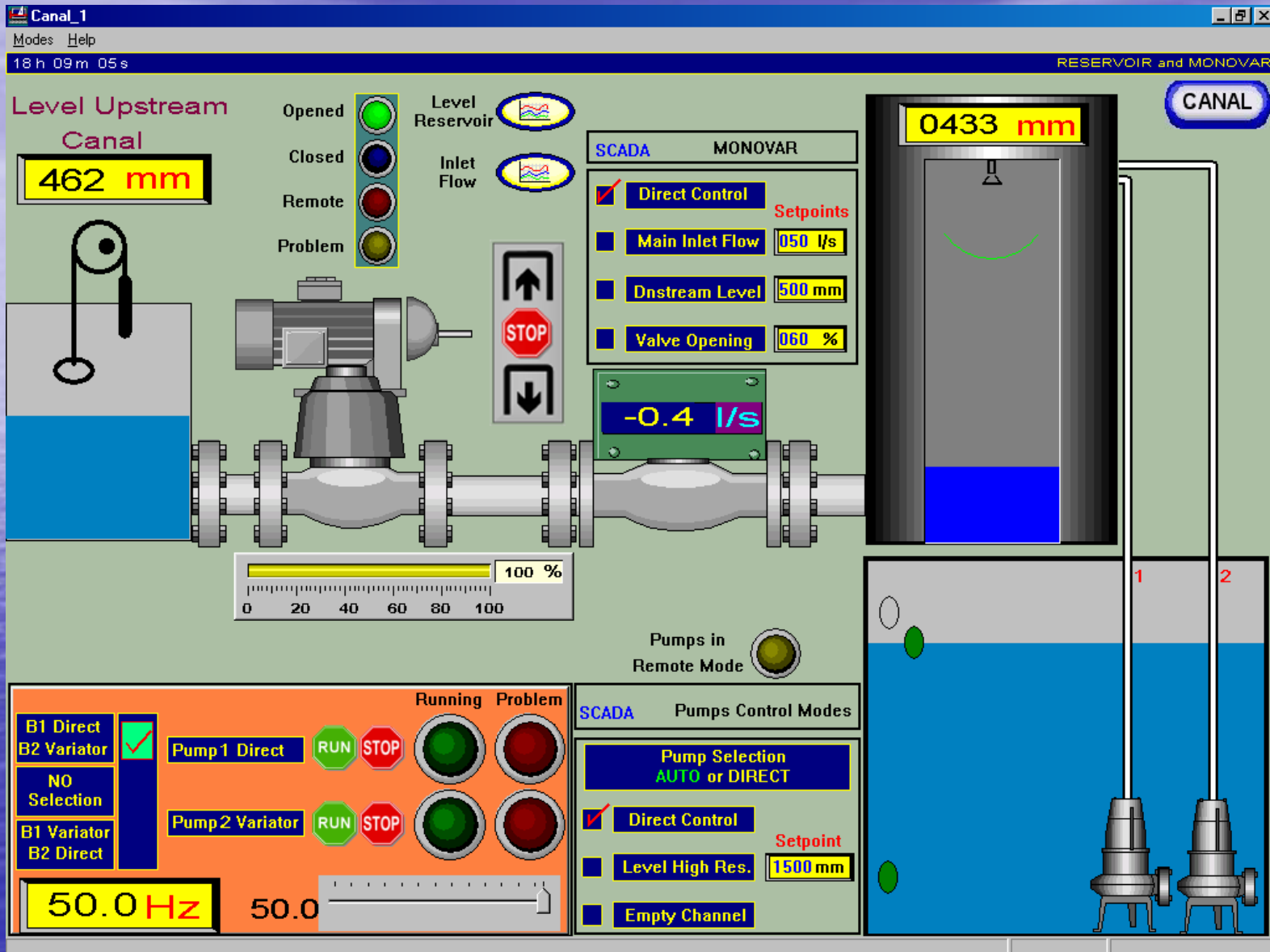
<div>SCADA Gate 4</div> <div> <input checked="" type="checkbox"/> Direct Control <input type="checkbox"/> Position <input type="checkbox"/> Upstream Level <input type="checkbox"/> Ask Before Check </div>	<div>SCADA Gate 3</div> <div> <input checked="" type="checkbox"/> Direct Control <input type="checkbox"/> Position <input type="checkbox"/> Upstream Level <input type="checkbox"/> Dnstream Level </div>	<div>SCADA Gate 2</div> <div> <input checked="" type="checkbox"/> Direct Control <input type="checkbox"/> Position <input type="checkbox"/> Upstream Level <input type="checkbox"/> Dnstream Level </div>	<div>SCADA Gate 1</div> <div> <input checked="" type="checkbox"/> Direct Control <input type="checkbox"/> Position <input type="checkbox"/> Upstream Level <input type="checkbox"/> Dnstream Level </div>	<div>SCADA Pumps</div> <div> <div>Pump Selection AUTO or DIRECT</div> <input checked="" type="checkbox"/> Direct Control <input type="checkbox"/> Level High Res. <input type="checkbox"/> Empty Channel </div>
<div>SCADA Offtake 4</div> <div> <input checked="" type="checkbox"/> Direct Control <input type="checkbox"/> Outlet Flow <input type="checkbox"/> Valve Opening </div>	<div>SCADA Offtake 3</div> <div> <input checked="" type="checkbox"/> Direct Control <input type="checkbox"/> Outlet Flow <input type="checkbox"/> Valve Opening </div>	<div>SCADA Offtake 2</div> <div> <input checked="" type="checkbox"/> Direct Control <input type="checkbox"/> Outlet Flow <input type="checkbox"/> Valve Opening </div>	<div>SCADA Offtake 1</div> <div> <input checked="" type="checkbox"/> Direct Control <input type="checkbox"/> Outlet Flow <input type="checkbox"/> Valve Opening </div>	<div>SCADA Valve Main Inlet</div> <div> <input checked="" type="checkbox"/> Direct Control <input type="checkbox"/> Main Inlet Flow <input type="checkbox"/> Dnstream Level <input type="checkbox"/> Valve Opening </div>

Instructions

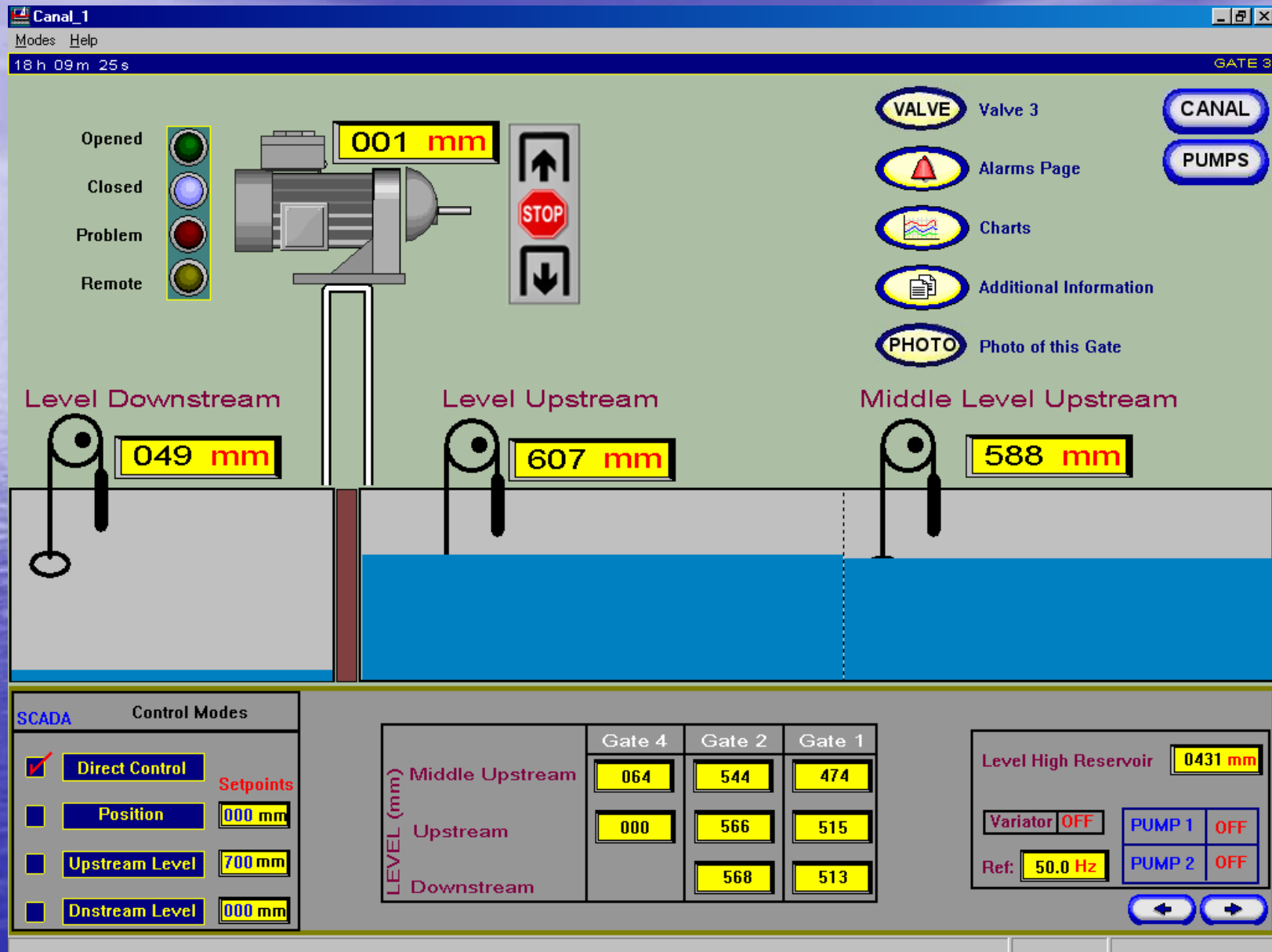
- Click on the boxes xxxxxxx to define the SETPOINT

- Check box ☐ to choose mode

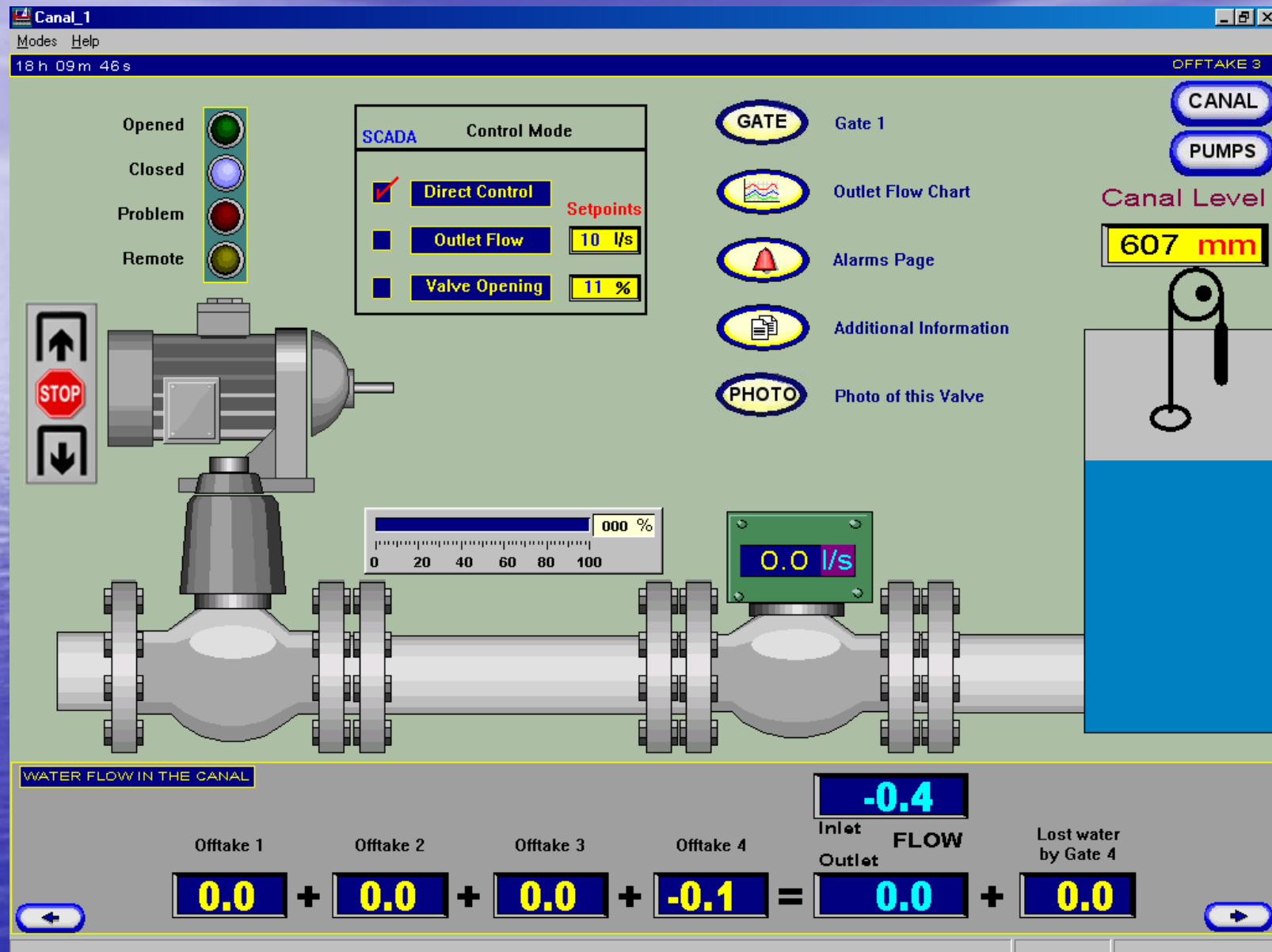
Reservatórios e Bombas



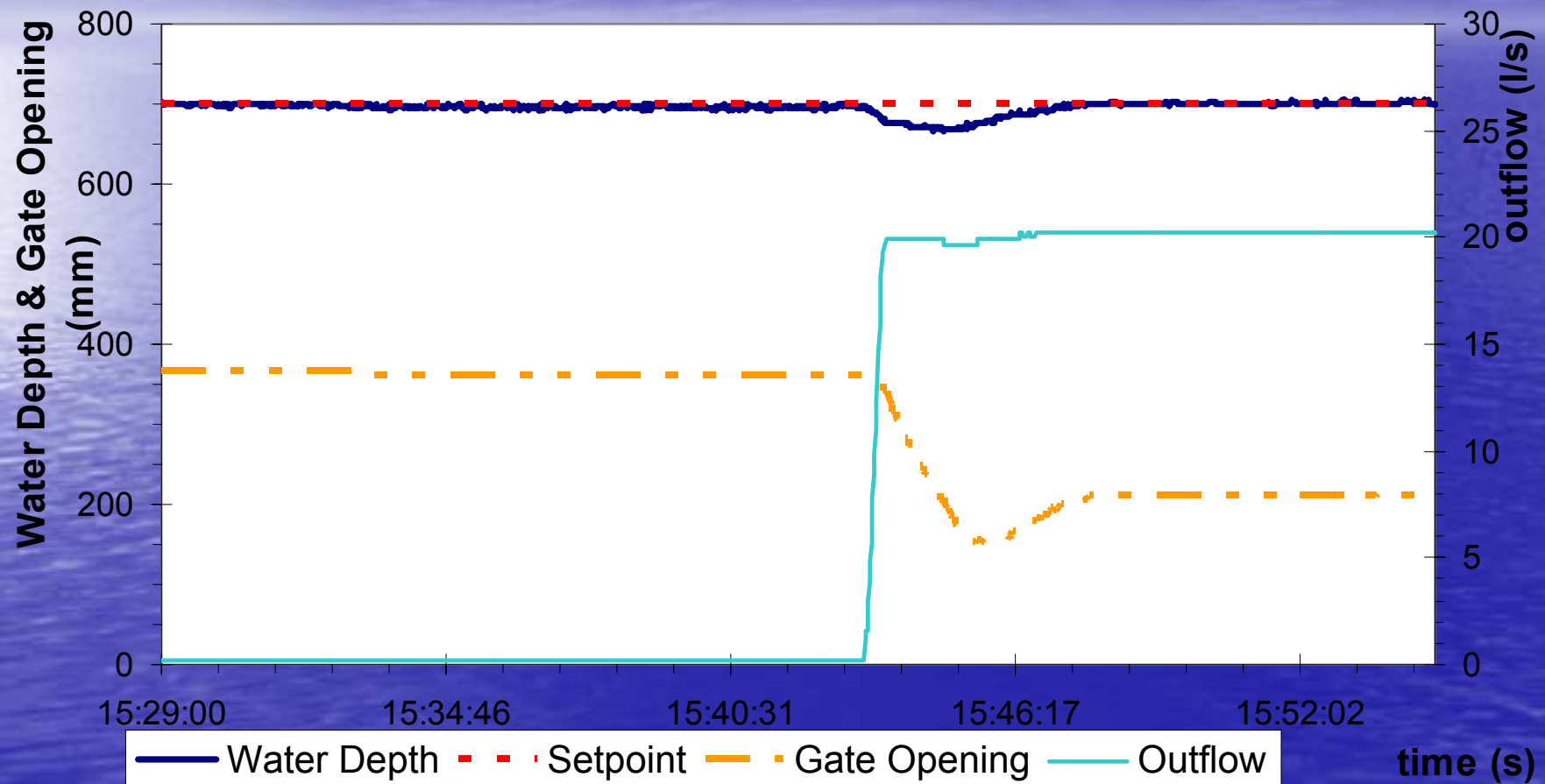
Comporta



Tomada de Água



Controlo da Profundidade



Controlo de Caudal

